

# PETERLOON

October 4-6, 2024

## ***Event Guide***

*October 2, 2024 FINAL Edition*

*All is subject to change*



***Dan Beard Scout Reservation  
Loveland, Ohio***

# CONTENTS

<b>Welcome to Peterloon 2024 – Prepared. For Life.</b>	3
<b>Chapter 1 – What is Peterloon?</b>	3
History	3
Calling All Scouts to Peterloon	3
Scout Troops & Venturing Crews	3
Webelos	3
Cub Scouts	3
Overview of 2024 EVENT	4
Leadership in Action.	6
Peterloon Camp Location	6
<b>Chapter 2 – Before Coming to Peterloon</b>	6
Registration	6
All registration is completed online.	7
Saturday Individual Registration for Scouts, Webelos and Cub Scouts	7
Registration Dates	7
Adding Participants to Your Registration	8
Cancellations	8
Peterloon Patch	8
IMPORTANT – ADULT CAMPING GUIDELINES (NEW FOR 2024)	8
Event Paperwork & Wristbands	9
Unit Roster – Required at Check-in	10
Medical Forms – Bring for Your Unit’s use	10
Participant Agreement Form: COPE/Climbing/Rappelling – Optional	10
Wrist Bands	10
Volunteers	12
Peterloon Merchandise pre-order	12
<b>Chapter 3 – Transportation, Arrival and Check-In</b>	12
Preparation	12
Remote Parking	12
Cargo Vehicles	12
Equipment Drop off at Campsite	12
General Driving Directions for Cargo Vehicles to Peterloon Campsite	13
Passenger Vehicles	13
Parking Area Tips	13
Special Needs Parking Passes	13
Friday Arrival	13
Saturday Transportation	13
Saturday Arrival – Day Participants & Cub Packs	13
Sunday Morning Departure	14
Prearranged Leaving of Peterloon by Scouts	14
Arrival at Campsite – Friday 2:00–9:00 pm	14

Check-In	14
Campsite Map	15
Camping Areas	21
Locating Your Campsite	21
Unloading Your Gear	21
Early Arrivals	22
Early Arrival – Thursday Camp Set-up	22
Early Arrival – Friday before 2:00 pm	22
Early Arrival Arrangements	22
Late Arrivals – until 10:45 pm Friday	22
Late Arrivals – after 10:45 pm Friday	22
<b>Chapter 4 – What to do at Peterloon</b>	23
FULL SCHEDULE COMING SOON!	23
Leader Meeting	Error! Bookmark not defined.
Saturday Food Court	Error! Bookmark not defined.
Saturday Night Arena Show	24
Religious Services	Error! Bookmark not defined.
Trading Post (Souvenirs)	24
Campfires & Cooking Fires	25
PETERLOON GATEWAY GOLF	25
Ed Basta Golden Spoon Award	Error! Bookmark not defined.
SCOUT LEADER HOSPITALITY TENT	27
Helpful hints for setting up your Peterloon Camp Site	27
<b>Chapter 5 – Leaving Peterloon and After the Event</b>	28
Check Out on Sunday – for BSA & venture Units	28
Process and Paperwork	28
Vehicle Passes and Troop Trailers	28
Campsite Inspection	Error! Bookmark not defined.
Cub Scouts	28
<b>Chapter 6 – Logistical Details</b>	29
Additional Info	29
The latest details about Peterloon are available:	29
Committee Contacts:	29
First Aid & Emergency Procedures	29
CAMPSITE RULES (SAFETY AND SANITATION)	29
SECURITY	30
FIREARMS ARE NOT PERMITTED	30
COVID POLICY	30
<b>Appendix A – Forms</b>	1
Peterloon Forms	1
Required – BSA Annual Health and Medical Record form	1
Optional – Participant Agreement Form for Climbing	1
2024 Peterloon Unit Roster	2

## Welcome to Peterloon 2024 – Prepared. For Life.

Peterloon 2024 is going to be an exciting mini Jamboree with fun around every corner! From hanging out at your campsite to camp-wide programs and shows, from tasty bites available from a fleet of food trucks to a fireworks display at the Arena Show ... *every minute of the Peterloon adventure has something to offer!* All BSA Troops, Venture Crews, and Webelos Scouts are welcome to participate. And again this year – Cub Scouts can attend on Saturday and Sunday.

Discover, explore, experience, create, participate, play and engage with thousands of other Scouts as you experience **Leadership in Action**.

**Michael McCrystal**  
Chair  
[Chair@peterloon.danbeard.org](mailto:Chair@peterloon.danbeard.org)

**Mike Wages**  
Programming Leader  
[Program@peterloon.danbeard.org](mailto:Program@peterloon.danbeard.org)

**Steve Richter**  
Logistics  
[Logistics@peterloon.danbeard.org](mailto:Logistics@peterloon.danbeard.org)

**Andrew Zahn**  
Scout Executive/  
Chief Executive Officer  
Dan Beard Council BSA

## Chapter 1 – What is Peterloon?

### HISTORY

Peterloon is the longest continuously operating camporee in the history of Scouting – a Dan Beard Council tradition since 1927.

Back in 1927, 300 Scouts and leaders participated in the first camporee at Peterloon Farm, the estate of a prominent Cincinnati family, the Emerys. Over the years, the event kept the name, even after moving to other locations, such as a county park and a local airport. By 1965, Peterloon was located at the Dan Beard Scout Reservation, where it has been held ever since.

Since the mid-1950's, Peterloon has been held (mostly) every other year. Peterloon 2019 was extra special – marking the 100<sup>th</sup> anniversary of Camp Friedlander, which has served as home for thousands of Scouts throughout the region since 1919.

### CALLING ALL SCOUTS TO PETERLOON

#### **Scout Troops & Venturing Crews**

Scouts BSA and Venturers of all ages are invited to attend Peterloon.

#### **Webelos**

Webelos who attend for the weekend must camp as a den and not individually with a Troop. Webelos (with two deep leadership) can camp adjacent to a Troop in Peterloon Fields. (See also Adult overnight Guidelines in this document)

Webelos also have the option of attending Saturday only activities. Parents of Webelos are encouraged to share in the Peterloon experience.

#### **Cub Scouts**

Cub Scouts will arrive on Saturday morning and may camp on Saturday night, or attend for Saturday only activities. Cub Scouts will find activities designed especially for them and will be able to participate in most activities. Parents of Cub Scouts are encouraged to share in the Peterloon experience.

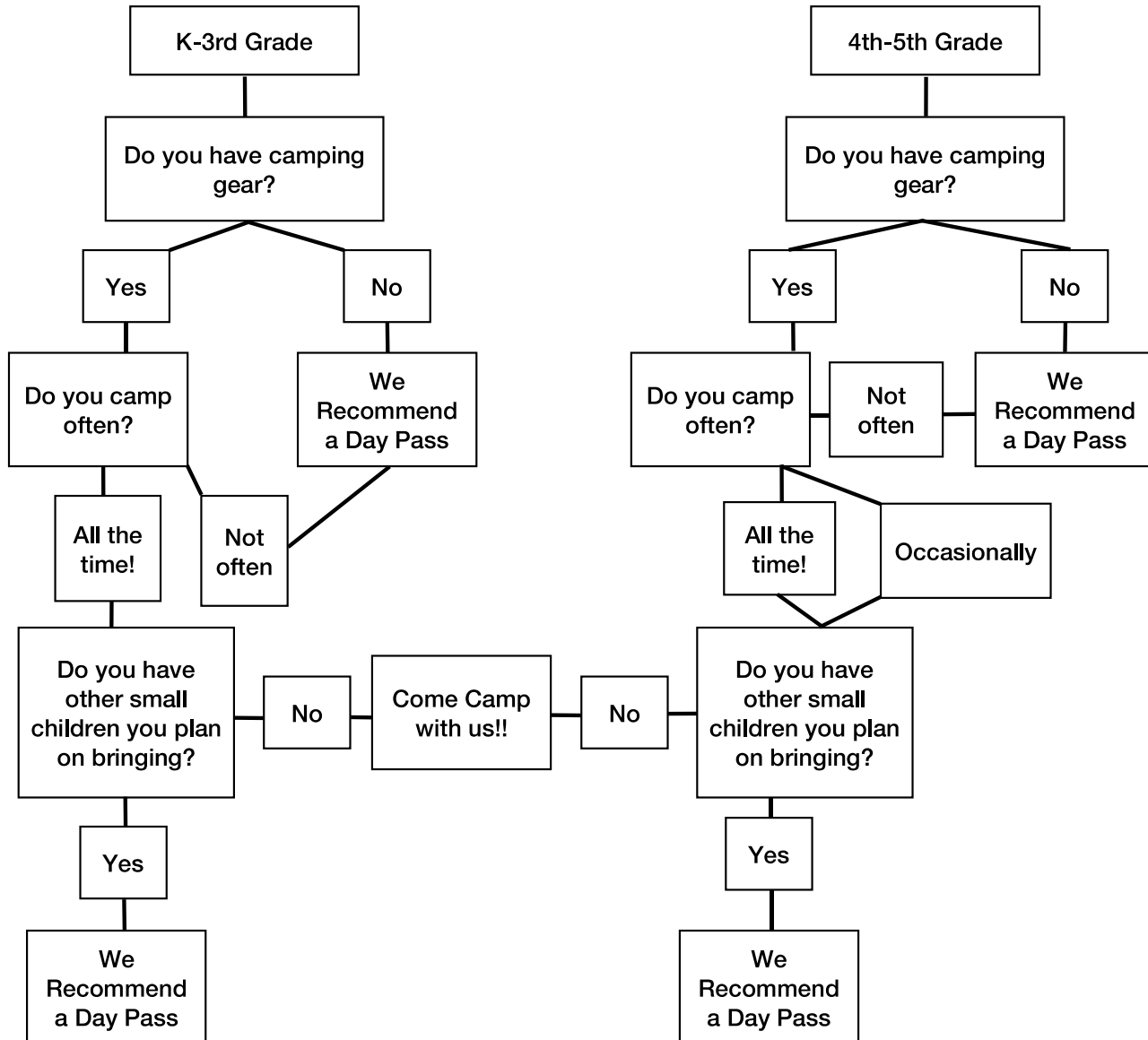
- Cub Scouts are encouraged to carpool as parking at Camp Friedlander is limited.
- All gear and personal items need to be in containers, backpacks, etc. to assist with moving them from your vehicle to the camping area by Peterloon staff.
- No personal vehicles allowed into Peterloon camp.

- Cub Scout campers will be provided dinner at the Dining Hall before the Arena show and breakfast on Sunday morning. Cub Scouts will be responsible for their own lunch. If you have dietary restrictions, please use this form: <https://docs.google.com/forms/d/e/1FAIpQLSfBk5dLYls3oOv1hgCTBbRsjabF7b1hqHjxBADUonYNhQz3uA/viewform>.



## Should my Cub Scout camp overnight or get a day pass?

Peterloon Cub Decision Tree



## OVERVIEW OF 2024 EVENT

### *Leadership in Action.*

Peterloon 2024 is an *experience* for Scouts full of activities, exhibitions/vendors, campsites, unit engagement, and camp-wide programs and shows!

## Details Coming Soon!

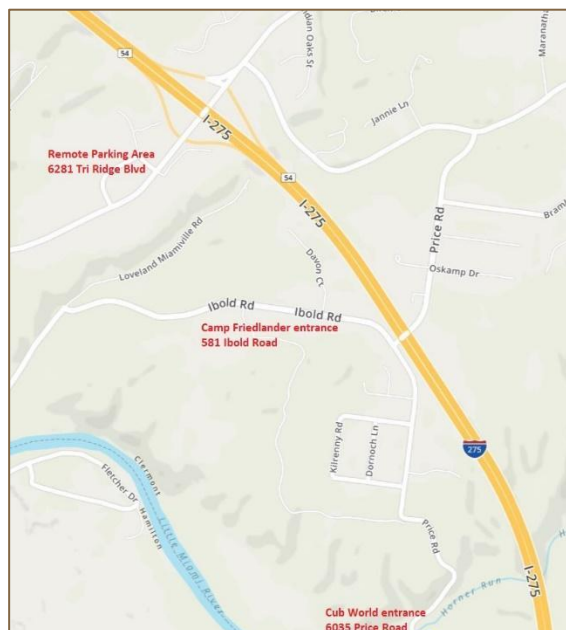
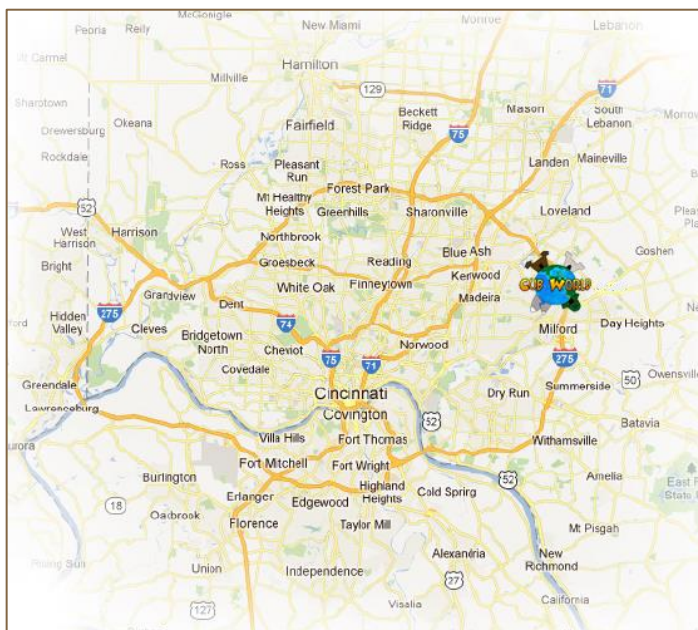
## PETERLOON CAMP LOCATION

Peterloon will be held at the Dan Beard Scout Reservation (Camp Friedlander, Camp Craig and Cub World) located in the northeast quadrant of Cincinnati just off I-275. **Read all about PARKING starting on page 9.**

**Camp Friedlander:** 581 Ibold Road, Loveland, OH 45140

**Cub World:** 6035 Price Road, Loveland, OH 45140 (Scouts BSA camping area)

**Remote Parking Area:** 6281 Tri Ridge Blvd, Loveland, OH 45140



## Chapter 2 – Before Coming to Peterloon

### REGISTRATION

All participants must be registered to attend Peterloon. This includes Scouts BSA, Venturers, Webelos, Cub Scouts, adult leaders, other adults attending with them, and volunteers. Siblings of Scouts and Cub Scouts may attend but must be registered with a Troop/Pack or as a day visitor. Registration rates are on the following page. **No walk-in visitors will be permitted to attend Peterloon.**

Registration for Peterloon will only be online at:  
[www.danbeard.org/peterloon](http://www.danbeard.org/peterloon)

***All registration is completed online.***

Register early = campsites closest to the activities go to earliest registrants. One registration is per unit. Required information:

- Unit Number and District
- A Key Contact for your Unit
- # of male scouts, # of female scouts, # of adults (includes names for each scout and leader).
- Volunteer Coordinator contact info
- Webelos will register separately
- Electronic roster required before checking in

Any changes to the registration quantities must be made before September 13. A large change in the number of attendees may move your assigned campsite field.

***Saturday Individual Registration for Scouts, Webelos and Cub Scouts***

Scouts, Webelos and Cub Scouts who wish to participate for the day on Saturday only must register online also. You will receive a confirmation email with your registration information and can bring that to check in at Peterloon. Required information:

- Registering Adult Name and Contact Info
- Unit Number and District
- # Adults that will be attending
- # of male youth and # of female youth
- Volunteer Coordinator contact info

***Registration Dates***

- April 1 – Early Bird registration begins at 9:00 am
- August 2 – registration continues – regular fees become effective
- \*\* Cub Scouts Packs may register at the early price through 9/13 \*\*
- September 13 – Registration ends for Scouts BSA and overnight Cubs
- Everyone attending Peterloon must be registered
- No walk-in visitors will be permitted to enter
- Saturday day visitors only registration ends on 9/20



	<b>Early Bird Registration Fee Per Attendee 4/1/24 – 8/1/24</b>	<b>Regular Registration Fee Per Attendee 8/2/24 – 9/13/2024</b>
Scouts BSA Youth & Adults <b>WEEKEND CAMPERS</b>	\$40 (No Meals Included)	\$45 (No Meals Included)
Webelos <b>ATTENDING W/ A TROOP</b>	\$40 (No Meals Included)	\$45 (No Meals Included)
Cub Scout Youth <b>SATURDAY – SUNDAY</b>	\$40 (Includes Saturday Dinner & Sunday Breakfast)	\$40 (Includes Saturday Dinner & Sunday Breakfast)
Cub Scout Adult <b>SATURDAY – SUNDAY</b>	\$40 (Includes Saturday Dinner & Sunday Breakfast)	\$40 (Includes Saturday Dinner & Sunday Breakfast)
Scouts BSA Youth & Adults <b>SATURDAY DAY VISITORS ONLY</b>	\$40 (No Meals Included)	\$45 (No Meals Included)
Adult Non-Unit Registration	\$40 (No Meals Included)	\$45 (No Meals Included)

### ***Adding Participants to Your Registration***

Instructions: <http://www.danbeard.org/peterloon-registration-help/>

### ***Cancellations***

Individuals or groups that cancel a reservation 30 days prior to the date of the event will receive a refund of fees paid, less 20% administrative charge. No refunds will be given after the 30-day cancellation deadline. Fees are transferable to other participants but are not refundable. To request a refund, please contact the Dan Beard Council Scout Service Center at 513-577-7700.



### ***Peterloon Patch***

Paid registrants receive a Peterloon 2024 patch (the actual patch may differ).

## IMPORTANT – ADULT CAMPING GUIDELINES (NEW FOR 2024)

To align with recently updated BSA camping guidelines aimed at ensuring the safety and security of our scouts during Scouting activities, we have implemented some modifications to our Peterloon camping procedures. These guidelines are essential to create a safe and enjoyable environment for our youth. Please read the following information carefully and ensure its dissemination(shared?) within your unit.

### Registration and Eligibility

**1. Adult Registration:** All adults aged 18 and above staying overnight in connection with a Scouting activity must be currently registered in an **adult fee-required position**. These positions include Committee Member, Scoutmaster, Assistant Scoutmaster, Charter Org Representative, Merit Badge Counselor, and Webelos Den Leader. Registration involves completing a background check and youth protection training and an adult application.

**2. Exception:** Cub Scout parents or legal guardians participating in an overnight Cub Scout program with their scout are not required to register as leaders. NOTE: If a parent is responsible for a Cub Scout other than their own, they must be registered as a leader.

**3. Responsibility for Other Children:** If a Cub Scout parent or legal guardian is responsible for a child other than their own, they must be registered.

**4. Grandparents:** If a grandparent who is not the legal guardian is attending an overnight event with the youth, they must also be registered. Grandparents who are not the legal guardian cannot share a tent with a scout.

### New Camping Requirements for Webelos

In addition to the guidelines above, there are specific requirements for Webelos camping:

**1. Leadership:** A minimum of two adult leaders must be present, following the "Two Deep Leadership" principle. At least one leader must have completed BALOO (Basic Adult Leader Outdoor Orientation) training.

**2. Camping as a Den:** Webelos must camp as a den and not individually with a Troop. Webelos (with two deep leadership) can camp adjacent to a Troop in Peterloon Fields.

These changes are implemented with the primary goal of ensuring the safety and well-being of our scouts. We are committed to providing a secure and enjoyable Scouting experience for all participants.

Thank you for your dedication to the scouting program and for helping us create a safer environment for our young scouts.

## EVENT PAPERWORK & WRISTBANDS

For more information on the specific forms, please see Appendix A of this Guidebook.

### ***Unit Roster – Required at Check-in***

A roster of your attendees must be completed and brought with you to Check-In.

### ***Medical Forms – Bring for Your Unit's use***

Parts A & B are required for all participants of your unit. The Unit Leader is to keep them in your possession at your campsite during Peterloon. These forms do not go to Peterloon Staff.

### ***Participant Agreement Form: COPE/Climbing/Rappelling – Optional***

Peterloon offers the opportunity to use established climbing and rappelling facilities to all Scouts who are 14 years of age and provide an Agreement Form. Each climber must have a properly completed copy with them. No one will be permitted to climb or rappel without one. Bring the completed form with you to Peterloon.

Link to form: <https://danbeard.org/wp-content/uploads/2023/09/COPE-Climbing-Consent-Hold-Harmless.pdf>

## Wrist Bands

Upon check-in, you will receive a registration packet that includes colored wrist bands for each person attending Peterloon with you. The wrist bands are required for admission to Peterloon and must be worn all weekend. Replacements will not be issued.



Different colors will represent different attendees, as follows:

Maroon: Attendees / Overnight (Scouts BSA)

Blue: Cub Scouts

Yellow: Vendor

## VOLUNTEERS

Peterloon is a success because of Scouters who are **HELPFUL** – before, during, and after the event. We ask each unit to provide 2-4 adults to serve as members of the Peterloon Service Team (PST). Members will work during the event for one 4-hour shift each. **PST members will get a neckerchief and patch for their service.**

Please list the name and email address for your Volunteer Coordinator during registration. Specific volunteer information such as name, volunteer time and task preference will be collected later.

Contact: [volunteer@peterloon.danbeard.org](mailto:volunteer@peterloon.danbeard.org)

## PETERLOON MERCHANDISE PRE-ORDER

The Peterloon online store will be open soon. Stay tuned! You can visit it for all of your Peterloon merchandise and apparel! **There will be limited quantities at the event**, so be sure to pre-order to ensure you get this awesome gear! **The store closes August 14.**

If you choose to pick up your order at Peterloon, it will be packaged for each unit. Unit leaders may pick up orders on Friday, October 4 between 5-9 PM at Cub World Frisch's Big Boy Pavilion.

If you have any questions/issues with peterloonshop.com, please contact PromoSpark at 800-319-3038.

Also, while at Peterloon, visit the Cub World and Camp Friedlander Trading Posts to purchase beverages, snacks, candy, and other items.

## Chapter 3 – Transportation, Arrival and Check-In

### PREPARATION

- Paperwork: Unit Roster, Volunteer list, Medical forms
- Load all gear into cargo hauling vehicles
- Load scouts into passenger vehicles
- Make sure your Scouts know your Sub-Camp area (1, 2, 3, 4, 5)

All participants will park in the Remote Parking Area (including cargo vehicles after unloading).

**PLEASE CARPOOL!**

### REMOTE PARKING

Tipton Interests Office Park at Wards Corner Road and Tri-Ridge Boulevard in Loveland, Ohio. Map on page 6. *Tipton Interests is providing this remote parking area at no charge to the Dan Beard Council. Please respect their property.*

#### Directions from I-275:

- Follow I-275 to the Ward's Corner Road exit (exit #54)
- Turn to the inside of I-275 onto Wards Corner Road
- Proceed to Peterloon Remote Parking Area on the right. The stone sign at the entrance says "Wards Corner - Tipton Interests Inc"
- Park in one of the available lots and walk to the central shuttle pick-up area

### CARGO VEHICLES

#### Equipment Drop off at Campsite

Troops should secure as much gear as possible in their cargo vehicles. These vehicles are allowed limited access within specific times for equipment drop-off and pick-up. All other gear must be carried by the campers from the Remote Parking Area.

There will be no traffic within the Peterloon site after 9:00 pm Friday through 10:00 am Sunday morning. (Exception: emergency traffic and support vehicles necessary to the operation of Peterloon, First Aid or other special needs.)

- Each registered unit will be mailed two Cargo Vehicle Passes that will allow the unit to haul their equipment into the Peterloon campsite ("Cub Scout Adventure World" at 6035 Price Road, Loveland, OH 45140).
- The requirement for vehicles to display passes to enter Peterloon will begin at 2:00 pm on Friday, October 4.
- Troop trailers will be allowed into the campsite and may remain parked at the campsite. The towing vehicle must have a cargo vehicle pass and must be moved to the Remote Parking Area immediately after unloading. No cargo vehicles will be allowed to remain in the Peterloon camping fields.
- Scouts and adults may ride in the Cargo Vehicles to Peterloon.
- To avoid traffic delays, registered troops are permitted to drop their troop trailer on Thursday night. This option requires advance permission – instructions on page 12.

### ***General Driving Directions for Cargo Vehicles to Peterloon Campsite***

- Follow I-275 to the Ward's Corner Road exit (exit #54)
- Turn to the outside of I-275 onto Wards Corner Road and be in the far right lane
- Make the first right onto Loveland-Miamiville Road
- Turn right onto Price Road
- Follow Price Road across I-275 and make a left at the stop sign to continue on Price Road
- Go past Camp Craig; the flashing "Camp Entrance" sign at the bottom of the hill will indicate the Cub World entrance on the right

## **PASSENGER VEHICLES**

Passenger Vehicles carrying campers and visitors are to proceed to the designated **Remote Parking Area** to board a shuttle bus to take them to the Peterloon campsite. Any gear not delivered to the campsite in Cargo Vehicles must be carried to the campsite by campers. All visitors to Peterloon must use the Remote Parking Area unless other arrangements have been made with Peterloon Staff.

### ***Parking Area Tips***

- Arrive before or after the highest peak time – most people arrive between 5:00-8:00 pm on Friday
- Arrange to have gear brought to the camp in a vehicle with a Cargo Vehicle pass
- Consider carpooling with another Scout

### ***Special Needs Parking Passes***

Individuals with disabilities may apply for a "Special Needs Vehicle Pass" to park in the designated parking area at camp (but not in any campsite or camping area). Written certification from a licensed physician along with your handicapped parking mirror tag will be required to use the "Special Needs Pass." You must request a "Special Needs Pass" application with your registration by September 13. Contact Michelle Byrne at [Michelle.Byrne@scouting.org](mailto:Michelle.Byrne@scouting.org) for more information.

### ***Friday Arrival***

Shuttle hours are from 2:00-10:45 pm. Buses will run between the Remote Parking Area and the Peterloon campsite.

### ***Saturday Transportation***

- Shuttles will begin running at 7:00 am from the Remote Parking Area.
- Shuttles will run continuously from the Remote Parking Area to the campsite and Camp Friedlander until 10:45 pm.
- Departures from the Peterloon event site will continue on Saturday evening until 11:00pm.

### ***Saturday Arrival – Day Participants & Cub Packs***

Those who arrive for Saturday only should ride the shuttles, you will check-in at Remote Parking and receive your wristband and patch.

Cub Scouts Packs arriving on Saturday to camp should come straight to the Camp Friedlander parking lot to unload gear and Scouts. Check-in begins at 8:00am at the Administration Building at Camp Friedlander. Pack and personal gear will be hauled to designated campsites by Peterloon staff. Each Pack will be issued parking passes based on the number of Scouts attending. Parking at the Camp Friedlander lot, however, will be on a first-come, first-served basis as parking space allows. Vehicles without pre-issued parking passes or without space available should be driven back to the Remote Parking Area and arrive via provided bus transportation.

### ***Sunday Morning Departure***

Shuttles will pick up at the Peterloon campsite and Camp Friedlander and drop off in the Remote Parking Area. The shuttles will run until everyone has been returned to the Remote Parking Area.

- Adults from Cub World to get vehicles to haul trailers begin departing at 9:30 am.
- Scouts from the Peterloon fields may begin departing at 10:00 am.
- Cub Scout Packs will begin departing Camp Friedlander at 11:00 am.

### ***Prearranged Leaving of Peterloon by Scouts***

If any Scout needs to leave camp, arrange to meet them at the Remote Parking Area. No vehicles will be allowed into the Peterloon site between 9:00 pm Friday and 10:00 am Sunday. Any vehicles desiring to access the Peterloon site during authorized entry hours must have a permit.

## **ARRIVAL AT CAMPSITE – FRIDAY 2:00–9:00 PM**

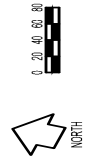
### ***Check-In***

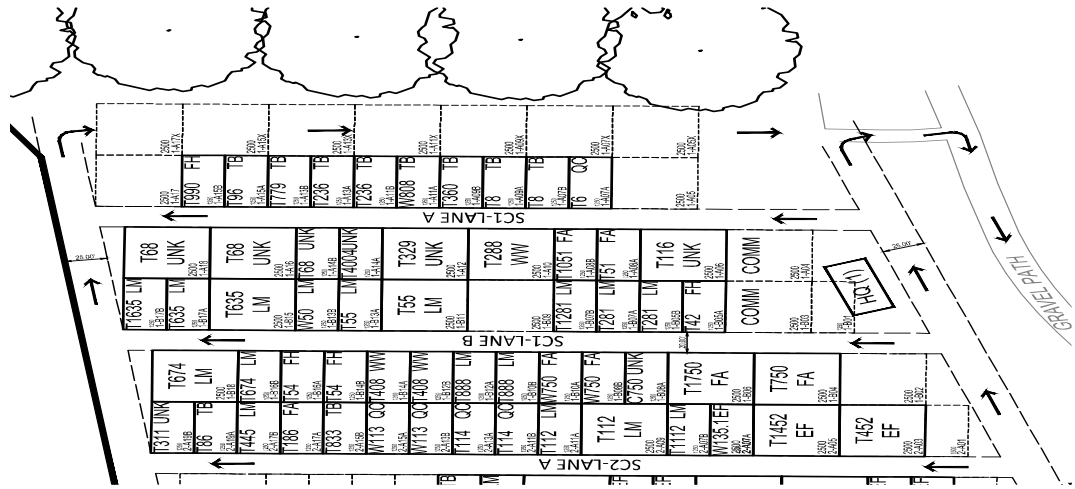
Upon arrival at the campsite, Unit Leaders should report to the Staff at Sub-Camp HQ. Bring a copy of your paperwork with you.

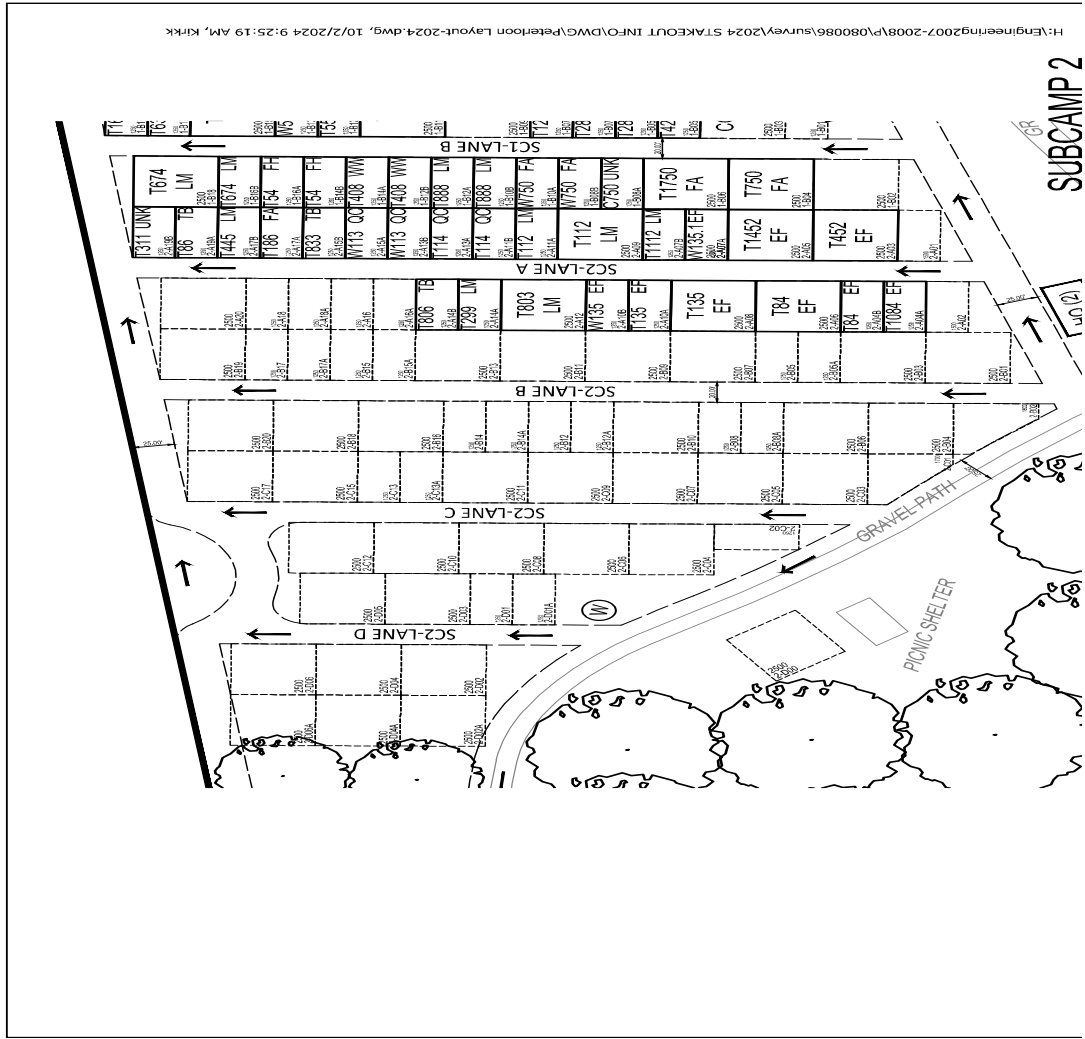
## Campsite Maps







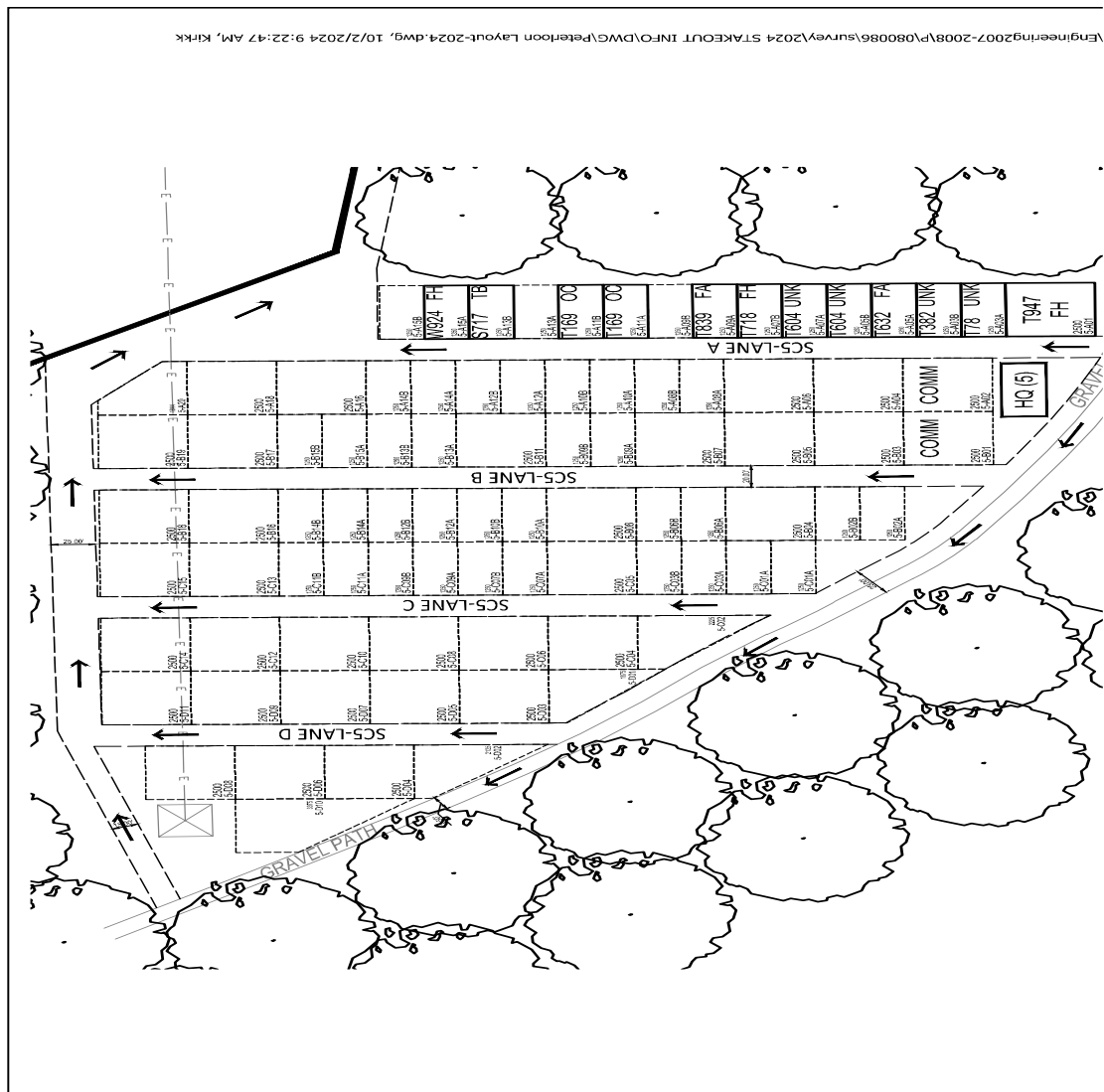




SUBCAMP 2







## CAMPING AREAS

Peterloo is grouped into Sub-Camps or Camping Areas. Each Sub-Camp is hosted by Scout Commissioners. They will be available during check-in to assist in locating your campsite.

### Locating Your Campsite

Your campsite identification number will consist of the following:

- A number between 1 and 5 indicating the number of your Sub-Camp.
- A letter between A and E indicating the name of the aisle you should turn into in your Sub-Camp.
- A hyphen separating the Aisle ID from your specific Campsite ID.
- A number between 01 and 20 indicating the number of your campsite on the aisle. Odd numbered campsites will be on your right, and even numbered campsites will be on your left as you drive up the aisle away from the river. (Example, 2A-05 will be the 3rd campsite on your right in the first aisle in Sub-Camp 2.)

Follow the guides and signs to your Sub-Camp's location. Please try to clear the entrance road as quickly as possible and keep the traffic moving.

### Unloading Your Gear

1. Pull Vehicle to side of road to keep access roads clear

2. Unload the vehicles
3. Drop any trailers
4. Remove vehicle from campsite: drive toward the river, turn left, and follow the exit road
5. Deliver the Cargo Vehicle to the Remote Parking Area and ride the shuttle bus back to Peterloon

## **EARLY ARRIVALS**

### ***Early Arrival – Thursday Camp Set-up***

Peterloon staff strongly encourages units to arrive on Thursday any time after 12:00 noon to locate and set up your campsite early.

- Arrangement must be made in advance with the Peterloon Campsite Commissioner – contact information listed below
- No unit will be allowed to set up prior to noon Thursday, October 3.
- Early arrivals on Thursday can set up their campsites and may camp overnight if they wish provided there is appropriate adult supervision provided by the unit at the campsite at all times

### ***Early Arrival – Friday before 2:00 pm***

Peterloon Campgrounds officially open at 2:00 pm on Friday, October 4. Units wishing to set up their campsite prior to that time on Friday may do so with permission of the Peterloon Campsite Commissioner.

- Cargo Vehicles rules and permits are in effect during Friday, regardless of arrival time
- Only Cargo Vehicles with permits will be admitted to the Peterloon site on Friday

### ***Early Arrival Arrangements***

To arrange early arrival and set-up, contact [camp@peterloon.danbeard.org](mailto:camp@peterloon.danbeard.org).

## **LATE ARRIVALS – UNTIL 10:45 PM FRIDAY**

Please go to the Remote Parking Area to board the shuttle bus. No cars will be admitted at the gates of Peterloon.

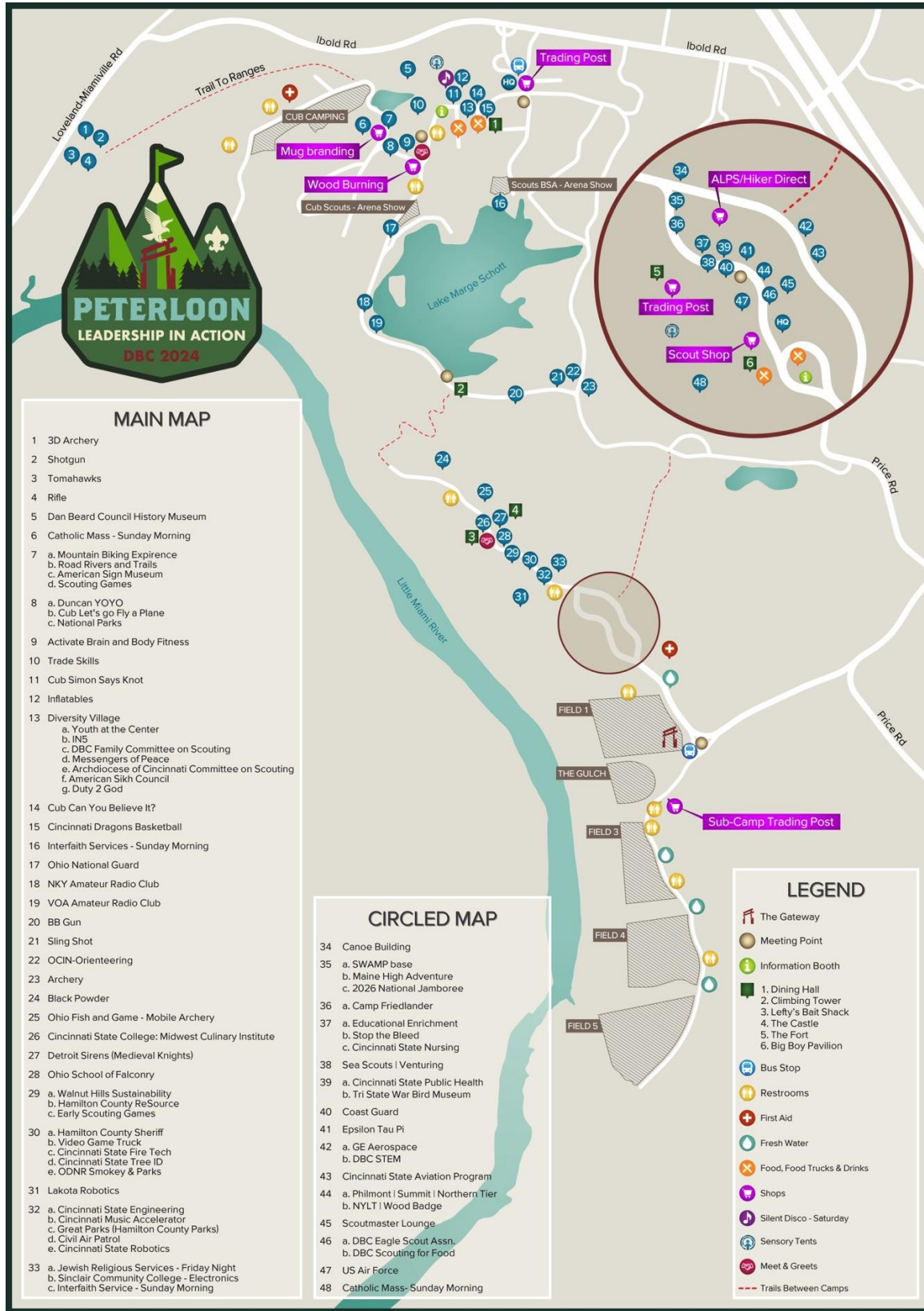
## **LATE ARRIVALS – AFTER 10:45 PM FRIDAY**

After 10:45 pm Friday, parents will have to drop off late arrivals at the Peterloon entrance (Cub World Entrance) located at 6035 Price Rd. No vehicles will be admitted to the campsite. All Scouts must carry in their gear. The campgrounds are expected to be quiet and dark at this time in the evening. Scouts should bring a flashlight and be sure they know their unit number and the Sub-Camp (1,2,3,4,5) where your unit is staying.



## Chapter 4 – What to do at Peterloo

(all scheduled events and activities are subject to change)





Food vendors will be on-site if your Scouts and / or adults would like to purchase lunch. A list of the food vendors will be included on the website at [www.danbeard.org/peterloon](http://www.danbeard.org/peterloon).

## FOOD COURTS:

### Cub World Food Court:

- Gateway Grub serves Chick-Fil-A, burgers, hot dogs, sausages, fries, candy, and more
- Street Fried
- Travelin' Tom's Coffee
- LaRosa's Pizza
- Kona Ice
- The Cone (ice cream)

### Camp Friedlander Food Court:

- Gateway Grub serves Chick-Fil-A, burgers, hot dogs, sausages, fries, candy, and more
- Graeter's Ice Cream
- LaRosa's Pizza
- Kona Ice
- Chili Hut
- Ignite Your Tastebuds

## SATURDAY NIGHT ARENA SHOW

- 8:00 pm – Event Begins

Peterloon's big event is back by popular demand – the Arena Show around Lake Marge Schott is on Saturday night. This event features music and fireworks!

Since we know that a Scout is Courteous, we should only have to remind Scouts and Leaders that:

- Units will parade from Sub Camps to the show. Buses are available for pre-approved Scouts only.
- Adults must remain with your Scouts and be responsible for their behavior. Make sure flashlights are kept off during the show.
- Laser pointers are not permitted! Any laser pointer found will be confiscated, and the offending person will be asked to leave the show.
- Bring plastic tarps to sit on – no chairs allowed.
- Please follow the Leave-No-Trace principles and pick up any trash or other items around you when you leave.

## TRADING POST (SOUVENIRS)

Our Trading Post is a hit for Scouts and Scouters alike. Here, you will find souvenirs, snacks, and pop for purchase.

## CAMPFIRES & COOKING FIRES

- There are no wood fires permitted within Peterloon campsites.
- Fires for meal preparation are permitted and must be limited to propane or charcoal fires in above ground portable fire pits or grills
- Scouts are expected to practice *Leave No Trace* to protect the campgrounds
- Ashes from charcoal fires must remain contained and transported off site safely

Campfires are not permitted in the Peterloon Camp Sites, however each sub camp will have a fire.

Fire will be for a limited time each evening and controlled by the sub camp Scout Commissioner.



# EVENT AGENDA



## Thursday, October 3

Noon	Early arrival and camp site set-up available IF PREARRANGED only
------	--

## Friday, October 4

### TRADING POST HOURS:

Camping Area	5:00-9:00 pm
Cub World Fort	5:00-9:00 pm

1:00 pm	Shuttle buses begin Begin check-in Set up camp Scoutmasters check in with your Sub-Camp HQ Pay balance of fees
5-9:00 pm	Cub World Food Court open Merchandise pick-up at Fort Trading Post
6:00 pm	<b>Peterloo officially begins!</b>
	Hiker Direct Silent Disco at the Gulch Gateway Golf Duncan Yo-yos Yard Games Branding / Mugs at the Fort
8:00 pm	Jewish Religious Service – Cub World BB Range 1
9:00 pm	Girls on Scouting Cracker Barrel - Big Boy Pavillion
9:45 pm	Peterloo Service Team (PST) Cracker Barrel – Sub-Camp 3 HQ
10:00 pm	Friday Activities Close
10:15 pm	Leader meeting at each Sub-Camp HQs <b>ATTENDANCE REQUIRED – SM &amp; SPL</b>
10:45 pm	Last shuttle bus from Remote Parking Area to Camp
11:00 pm	Shuttle stops running to Remote Parking Area Lights out — Generators Out — All Quiet

## Saturday, October 5

### TRADING POST HOURS:

Camping Area	9:00 am - 9:00 pm
Cub World Fort	9:00 am - 5:00 pm
Camp Friedlander	9:00 am - 9:00 pm

7:00 am	Reveille! Shuttles start running
7:15 am	Flag Raising in Unit Campsites, Sub-Camp HQs, Peterloo HQ
7:30 am	Breakfast in campsites Hot Air Balloon Experience
9:00 am	<b>Activities open</b> Trading posts Open Adult Hospitality Opens - Behind Cub World Admin Building Cincinnati Dragons Wheelchair Basketball (9-10AM, Dining Hall)
10:00 am	Air Force Band of Flight
10:30 am	Food Courts open
12:00 pm	Golden Spoon Competition – Cub World Fort

1-2 pm	Meet your Executive Team – Peterloo Tower at the Camp Friedlander Gaga Pits
2:30-3:30 pm	Meet your Executive Team - Cub World - Lefty's Bait Shack
4:00 pm	<b>Activities close</b>
4:15 pm	Ribbon cutting at the Gateway
5:00 pm	Dinner in Campsites Cub Dinner at Camp Friedlander Dining Hall
6:00 pm	Flag lowering in Unit Campsites, Subcamp HQs, Peterloo HQ Meet & Greet with Luke Null – Sub-Camp 3 HQ (6-6:30PM)
6:30 pm	Units parade to Arena Show from Sub Camps
7:00 pm	<b>Arena Show Pre-Show</b> – Music and Gathering Begins (No Chairs Allowed)
8:00 pm	<b>Arena Show Begins</b>
10:00 pm	Campers restricted to unit campsites
10:45 pm	Last shuttle bus to Camp from Remote Parking Area
11:00 pm	Shuttle stops running to Remote Parking Area Lights & Generators Out — All Quiet

## Sunday, October 6

### TRADING POST HOURS:

Camping Area	9:00 am – 11:30 am
Camp Friedlander	9:00 am - 11:30 am

7:00 am	Reveille!
7:15 am	Flag raising in Unit Campsites, Sub-Camp HQs, Peterloo HQ
7:30 am	Breakfast in campsite Cub Breakfast in Camp Friedlander Dining Hall
8:00 am	Catholic Worship Service - Camp Friedlander Chapel
8:30 am	Catholic Worship Service - Cub World Fire Ring Interfaith Worship Service - Cub World BB Gun Range 1 Interfaith Worship Service – Camp Friedlander Amphitheater
10:00 am	Break camp, clean up campsites Cargo vehicles allowed to enter camping area Mandatory campsite inspections by Sub-Camp Staff Begin (Unit Leaders Should Alert Sub-Camp HQ When You're Ready) Sub-Camp Staff to Distribute Peterloo 2024 Patches Upon Each Unit's Successful Completion of Campsite Clean-Up, Inspection & completed survey Shuttle starts running to Remote Parking Area
Noon	Peterloo 2024 ends  Shuttles will run until all Scouts have been returned to the Remote Parking Area

## ED BASTA GOLDEN SPOON AWARD

THE GOLDEN SPOON AWARD IS ONE OF THE MOST POPULAR AND TASTIEST PROGRAMS AT CAMP FRIEDLANDER. THIS IS THE ADULTS' OPPORTUNITY TO SHOW OFF THEIR OUTDOOR COOKING EXPERTISE.

Adults are asked to provide their own food, cooking utensils, table service and abilities. The winners will be presented with the coveted Golden Spoon at the closing campfire each week.

Peterloon will hold their Golden Spoon in 2024, the winners from each week at summer camp will be our in-council contestants. Out of council participants wishing to participate should contact our Programming Chair – [Program@peterloon.danbeard.org](mailto:Program@peterloon.danbeard.org) for details. Judging will take place on Saturday at noon in the Fort. ONLY RULE: All cooking must be done in the Peterloon Campsites.

## SCOUT LEADER HOSPITALITY TENT

The **Silver Beaver Alumni Association** will be hosting a hospitality area with coffee, juice and cookies for Scout Leaders. Look for their tent near the Cub World Admin building on Saturday from 9am-5pm.

## HELPFUL HINTS FOR SETTING UP YOUR PETERLOON CAMP SITE

- Patrols/Troops set up camp
- Set up dining fly first – put gear under it to protect from weather
- Set up tents – then move personal gear into tents. Lay out sleeping gear
- Finally, an identity piece at the entrance to your campsite will tell the other units who you are, and where you are from
- Set up cooking and eating area, secure water and fuel supply

## Chapter 5 – Leaving Peterloon and After the Event

### CHECK OUT ON SUNDAY – FOR BSA & VENTURE UNITS

#### Process and Paperwork

- 8:30 am – Troops are encouraged to attend Religious Services
- 10:00 am – Cargo Vehicles permitted to enter Campsite Area
- 10:00 am – Campsite Inspections begin

**NOTE:** Only cargo vehicles with permits will be allowed to enter the Camp Area to load gear.

#### Vehicle Passes and Troop Trailers

Cargo vehicles are restricted from entering the Camp Area until after 10:00 am Sunday. This is for the safety of the Peterloon participants and to ensure that traffic congestion is kept to a minimum. These vehicles must remain at the Remote Parking Area otherwise.

#### Religious Services:

Peterloon 2024 and our D2G religious services committee is excited to offer more services and locations this year! Our Jewish services will be on Friday night at 8pm at Cub World in the BB range shelter. On Sunday in Cub World at 830, we will offer Catholic Mass in the amphitheatre behind the Big Boy pavilion. At the BB range shelter, we will offer an interfaith service for all other faiths at 830\* Scouts are encouraged to sign up to help read scriptures and prayers during the service. Signups to help will be posted on our FB page and at the subcamps Friday night. On Sunday in Friedlander we will have a Mass at 8am in the chapel, and at 830 in the amphitheater there will be an interfaith service for all other faiths. As a reminder there will be a patch available for attending any one of these services in person.

#### Campsite Inspection

Your campsite will be inspected prior to final check-out. The Sub-Camp staff will inspect campsites before releasing your unit. You are to request an inspection from the staff at Sub-Camp HQ when you are ready for inspection.

**More Information:** You can find out more information on Leave No Trace at: [scouting.org](https://scouting.org) and [LNT.org](https://LNT.org)

All units are expected to follow the “Leave No Trace” camping guidelines. Campsites must be clean enough for Camp Rangers to be able to cut grass without having to get off tractors and remove objects. Place rocks, logs, and natural debris outside of the camping fields and three feet into the tree line or other uncut areas. All units must police their campsite and dispose of bagged trash properly. Dumpsters are provided at each Sub-Camp HQ.

Upon successful inspection, the Sub-Camp staff will provide your Troop with your Peterloon patches and ribbons.

#### Cub Scouts

Cub Scout campers will be provided breakfast Sunday after morning services. Cubs will depart at 12noon.

### ADDITIONAL INFO

*The latest details about Peterloon are available:*

- On the Peterloon website at [www.danbeard.org/peterloon](http://www.danbeard.org/peterloon)
- On the Peterloon Linktree at [linktr.ee/peterloon](http://linktr.ee/peterloon).
- From your district executives and from the staff at Dan Beard Council – 513-577-7700
- Friday when you check-in – unit leaders will receive any updated information at your Sub-Camp.
- Friday night at 10:15 PM at the cracker barrel in each Sub-Camp HQ (just for Scoutmasters, SPL's, Venture Crew Presidents and Advisors)
- Volunteer cracker barrel - Time TBD - stay tuned!

### Committee Contacts:

- Camping – [Camp@peterloon.danbeard.org](mailto:Camp@peterloon.danbeard.org)
- Peterloon Chair – [Chair@peterloon.danbeard.org](mailto:Chair@peterloon.danbeard.org)
- Logistics – [Logistics@peterloon.danbeard.org](mailto:Logistics@peterloon.danbeard.org)
- Programming – [Program@peterloon.danbeard.org](mailto:Program@peterloon.danbeard.org)
- Volunteering – [Volunteer@peterloon.danbeard.org](mailto:Volunteer@peterloon.danbeard.org)
- Registration – [register@peterloon.danbeard.org](mailto:register@peterloon.danbeard.org)
- General Information – [Info@peterloon.danbeard.org](mailto:Info@peterloon.danbeard.org)
- Cub Scouts – [cubs@peterloon.danbeard.org](mailto:cubs@peterloon.danbeard.org)

### FIRST AID & EMERGENCY PROCEDURES

An emergency contact telephone will be staffed 24 hours per day should anyone outside need to contact anyone at Peterloon. The phone number is 513-831-8311, Ext 2.

A complete First Aid station and qualified First Aid team will be on hand at the First Aid shelter at all times. This shelter is near the entrance bridge to Cub World. All serious injuries or illnesses need to be reported to the First Aid team members. If necessary, they will transport to the local hospital.

**No Scout should be taken out of camp for medical reasons without contacting the First Aid team.**

Peterloon staff are equipped with radios and also can call the First Aid team. Contact Peterloon staff at the Cub World Administration Building.

Each Troop is requested to bring a First Aid kit to handle minor injuries. All prescription medications used by Scouts must be dispensed by an adult leader.

A completed health history with a parent or guardian signature, for each Scout attending, must be in the possession of the Scoutmaster. More information is available in Appendix A of this document.

### CAMPSITE RULES (SAFETY AND SANITATION)

Due to the large number of people attending Peterloon, the following safety rules will apply:

- No campfires will be permitted
- Approved cooking consists of charcoal and propane gas (no wood fires allowed in campsite)
- No liquid fuel lanterns, candles or open flames in tents
- All fuels must be stored under control of an adult (see BSA liquid fuel policy)
- All water areas are off limits except when being used for official events.
- No football, Frisbee, baseball or any physical contact games are to be played in the Peterloon campsite area
- No dish washing, clothes washing, or playing is permitted at water hydrants

- No generators

#### Safety and Sanitation Guidelines:

- Scouts are expected to practice "Leave No Trace" to protect the campgrounds and contain all ashes in fire resistant containers (metal trash cans with lids).
- Please bring trash bags and dispose of trash in the dumpsters at the Sub-Camp HQs.
- Please do not leave any trash in the Peterloon fields.
- Portable toilets are provided. Please keep them clean.
- The Peterloon fields are dark and unlit, have attendees bring flashlights for night trips to the portable toilets.

## SECURITY

Security is provided for common areas during the day and night. Please assist the Peterloon Staff with problems and report them to any Peterloon Staff, or Sub-Camp HQ as soon as possible.

- Peterloon HQ and each Sub-Camp HQ has a portable two-way radio for staff use 24 hours a day. Security problems should be reported to the Sub-Camp or Peterloon HQ staffs.
- In addition, uniformed Explorers will patrol the Peterloon site throughout the weekend. Alert them to any security or medical emergency.
- During the daylight hours, each Sub-Camp and unit should maintain its own security by always having an adult in the campsite.
- Unit leaders are responsible for keeping Scouts out of water areas, creeks, and the river when not being used for an event.

## FIREARMS ARE NOT PERMITTED

The BSA has specific policies regarding handguns or other firearms at Scouting activities. While various state laws have authorized individual Scouters to legally carry or conceal firearms, Scouters/parents/volunteers are not permitted to carry them while involved in Scouting activities outside of the shooting sports program.

The BSA policy in the ***Guide to Safe Scouting*** states, "Except for law enforcement officers required to carry firearms within their jurisdictions, firearms shall not be brought on camping, hiking, backpacking, or other Scouting activities except for those specifically planned for target shooting under supervision of a currently certified BSA national shooting sports director or National Rifle Association firearms instructor."

## COVID POLICY

Just as our summer camps did, we will follow the current CDC guidelines found at <https://www.cdc.gov/coronavirus/2019-ncov/index.html> (for Clermont County, Ohio).

## Appendix A – Forms

### PETERLOON FORMS

Form Name	Required or Optional	Complete Before Peterloon	Bring to Peterloon	Provide at Check-in	Notes
Event Registration	Required	Yes	No	No	All registration is online
Unit Roster	Required	Yes	Yes	Yes	Sample attached; you are free to use your own form
BSA Annual Health and Medical Form	Parts A & B Required	Yes	Yes	No	Unit leader collects these for each participant and keeps them at the Camp Site. Do not provide to Peterloon.
Participant Agreement	Optional - Required to Climb	Yes	Yes	No	Scouts who wish to climb or rappel must bring the completed form with them to the event

### REQUIRED – BSA ANNUAL HEALTH AND MEDICAL RECORD FORM

Parts A & B are required for all participants of your unit. The Unit Leader is to obtain these forms and keep them in your possession at your campsite during Peterloon.

- The Annual BSA Health and Medical Record Form at the following web site:  
[https://filestore.scouting.org/filestore/HealthSafety/pdf/680-001\\_AB.pdf](https://filestore.scouting.org/filestore/HealthSafety/pdf/680-001_AB.pdf)

### OPTIONAL – PARTICIPANT AGREEMENT FORM FOR CLIMBING

Peterloon offers the opportunity to use the climbing and rappelling facilities on Saturday to all Scouts who are 14 years of age and provide an Agreement Form. Each climber must have a properly completed copy with them. We operate these facilities safely with trained and certified instructors, but we are required to have a signed Participant Agreement Form. No one will be permitted to climb or rappel without one.

- Participant Agreement Form – is available online at

<https://danbeard.org/wp-content/uploads/2023/09/COPE-Climbing-Consent-Hold-Harmless.pdf>



# 2024 PETERLOON UNIT ROSTER

This form is a sample. All units are expected to bring a similar roster with them to Peterloon and provide the form during Check-In. Copy this form and use multiple forms as needed.

**UNIT**

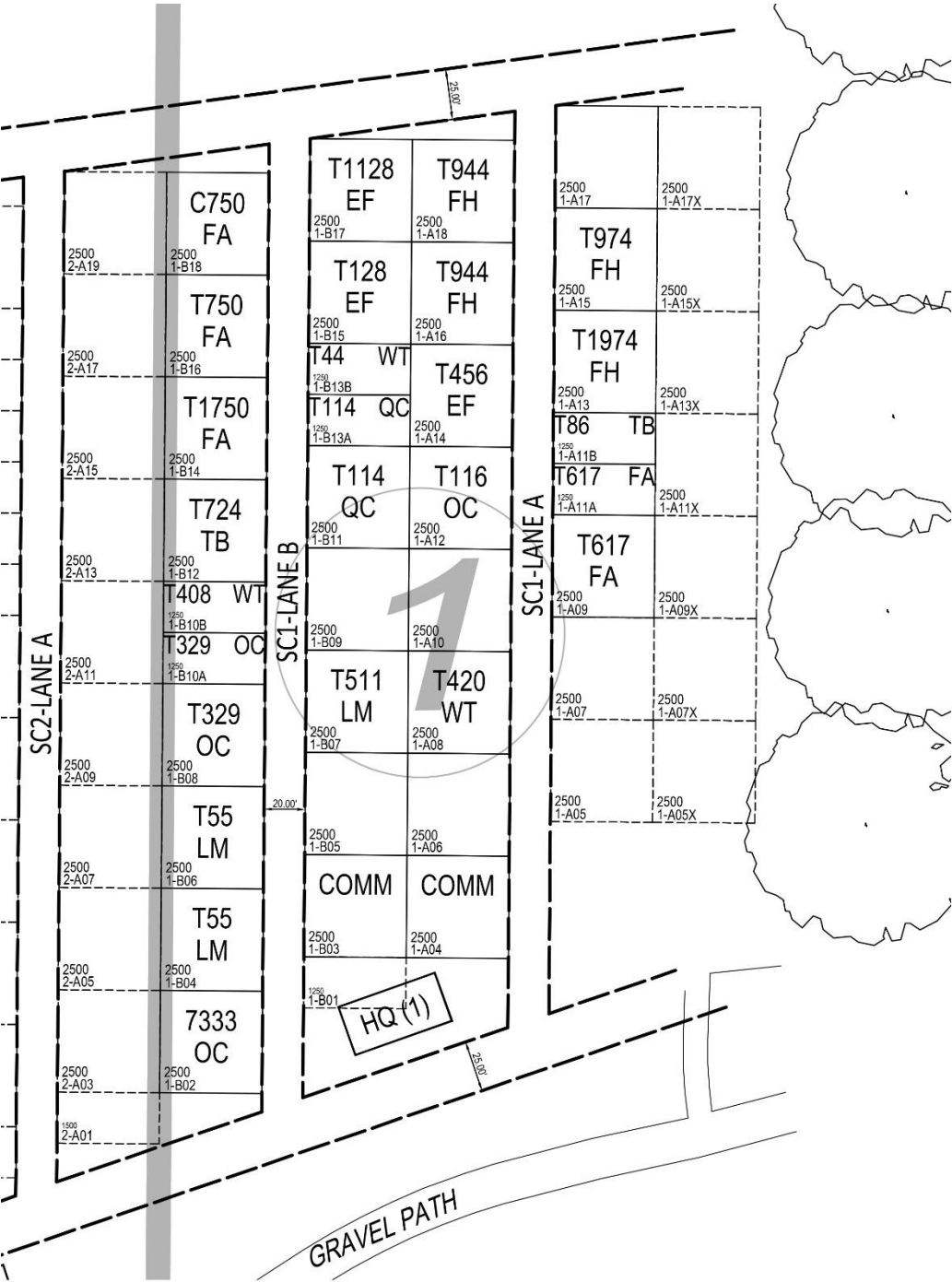
Council: \_\_\_\_\_ District: \_\_\_\_\_ Unit: (Troop / Crew) Number: \_\_\_\_\_

**LEADER**

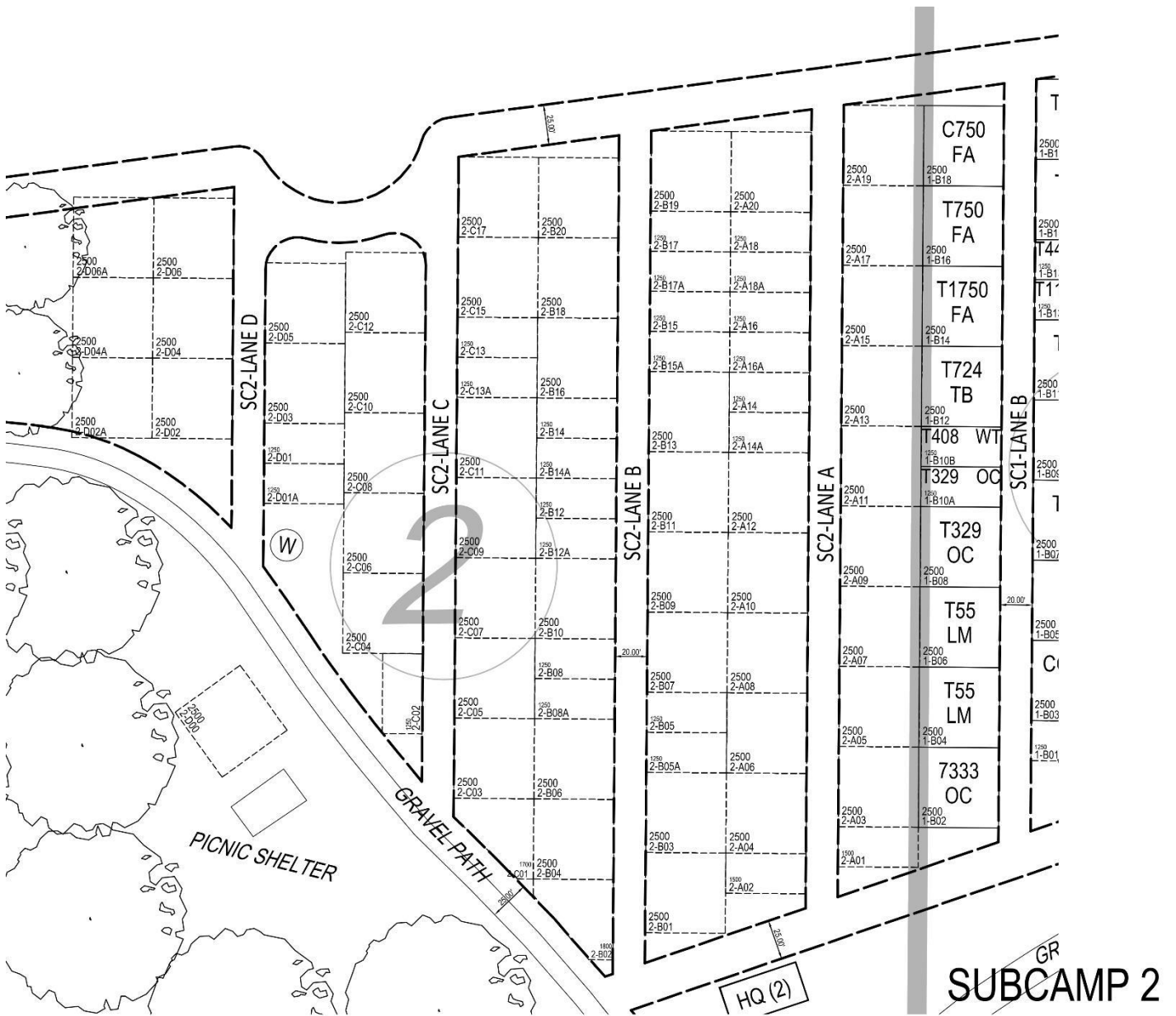
On-Site Leader's Name: \_\_\_\_\_ Cell Phone: \_\_\_\_\_

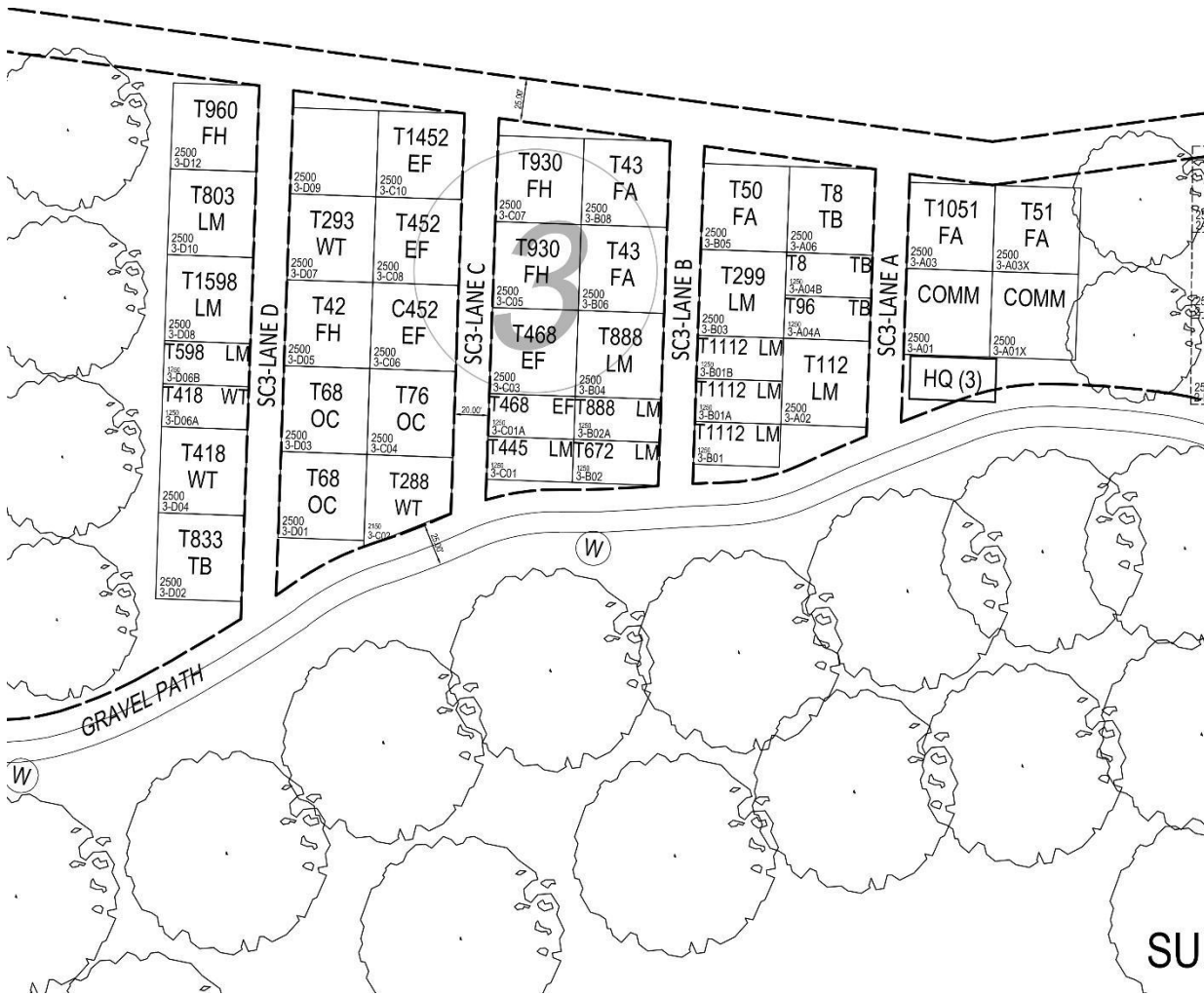
Sheet # _____ of _____	Sc ou t	V en tu re	W eb el os	A du lt	Cub Sco ut
1					
2					
3					
4					
5					
6					
7					
8					
9					
10					
11					
12					
13					
14					
15					
Total:					

# 2024 SCOUTS BSA CAMPSITES

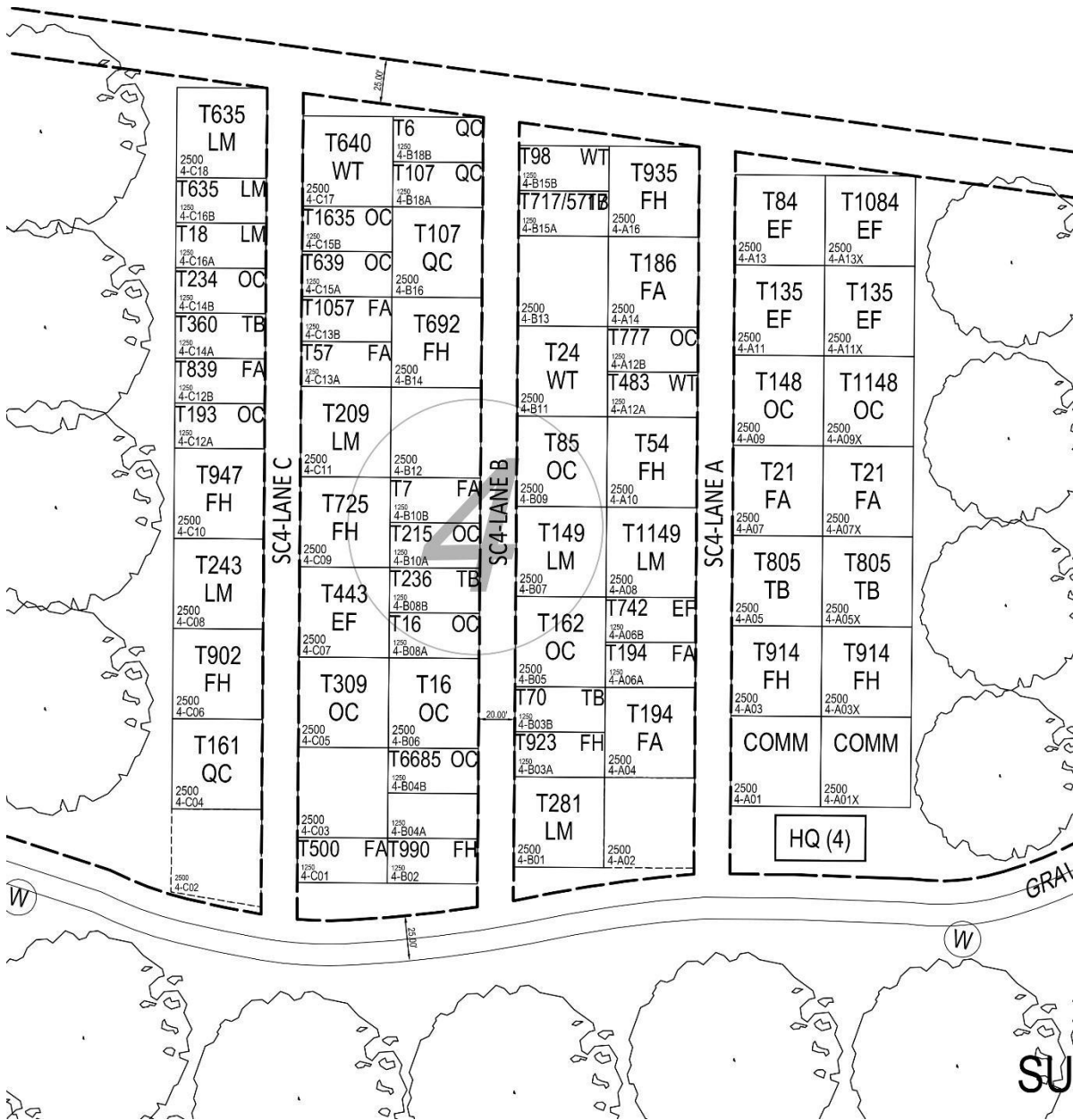


SUBCAMP 1





SUBCAMP 3



SUBCAMP 4



