



To: Dan Beard Council National Jamboree Contingent

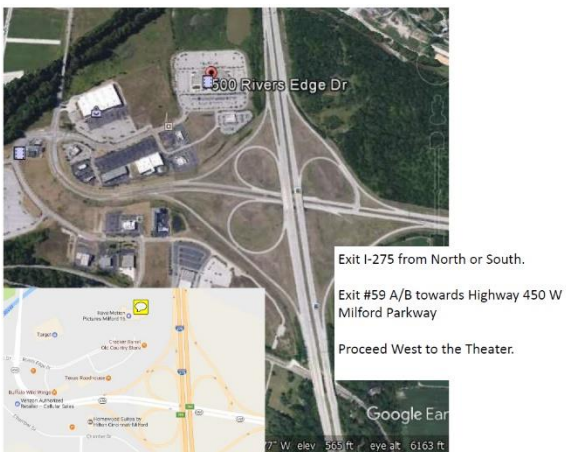
Here are the transportation details for the Jamboree. Please read this carefully as it is chock full of important stuff.

All participants (youth and adult) are required to travel to and from the Jamboree with the Dan Beard Council contingent. The logistics of the Jamboree site are incredibly well designed. In fact, the Jamboree site becomes one of the largest populated “cities” in the state of West Virginia in 24 hours as 20,000 people enter the high adventure base and set up camp. We will have an organized check-in process for the

Dan Beard Contingent to facilitate loading our buses and getting everyone safely to the Jamboree.

Location

- Bus Transportation will originate from the rear parking lot of the CineMark Motion Pictures – Milford 16 Cinemas (off the Milford Parkway near I-275). [Click here for directions in Google maps](#)
- Follow the Directions – there will be signs for your troop to check-in and drop gear for the bus. Please follow the signs and the instructions from the volunteers.
- The drop off location will be in the rear of the theater. Maps of the parking lot and check in locations are shown below:



Departure/Check-in July 19th

- **Arrive** for departure on Wednesday, July 19th **between 5:30 and 5:45am**.
- Please eat breakfast and attend to bathroom needs before you arrive. Yes, there are bathrooms on the buses, but be prepared!
- Please wear your full Field Uniform (a.k.a. Class A Uniform), with your Jamboree troop Activity Uniform (Class B) t-shirt underneath.
- Gear should be packed in your Duffle Bag and Daypack. Your Duffle Bag will go in the luggage compartment under the bus, and your Daypack will go with you in your seat. All bags should be marked with luggage tags and your name should be on everything!
- When you arrive, look for the check in table for you unit. Each participant is pre-assigned to a bus with their unit. Proceed to sign in where you will insure all necessary paperwork is complete including. med forms and rafting release form. Then turn over all medications to the

leader in charge and follow directions about stowing gear.

- At the jamboree site, you may need to carry your gear up to ½ mile from the bus to the campsite, so be sure that it is packed in a way you can carry. Be sure to pack gear so it is protected from rain – there will be no shelter at the summit while setting up camp.
- We will be driving straight from the departure point to the Summit, approximately 5 hours. You can bring snacks for the bus ride, but they must be neat and you must clean up after yourself. Please bring only water or clear liquids to avoid spills on the bus. The next meal after departure will be lunch at our camp site at the jamboree.
- Buses leave for the Summit at 6:30 am sharp

Please don't arrive before 5:30 am – the volunteers will still be setting up. Definitely don't arrive after 6:00 am. The buses will load at 6:15 am and depart by 6:30 am. We will not wait for late arrivals.

Return – July 28th

We will return to the same location on Friday, July 28th. Leaving the Jamboree is quite unpredictable, so all return times are estimates. We estimate be back at the cinemas between 2:00 and 4:00pm. Exact return time will be communicated by a text from your scout or email from the leaders when on route. Note that different buses will return at different times.

Contact

The contact for questions on the days of departure and arrival will be Tom Reckner, DBC Jamboree Chairman. His cell number is +1 (513) 608-7503.

As always, there is more information on the Dan Beard Council Contingent website . Be sure to like and follow our Facebook page:

<https://www.facebook.com/DBCJambo.>

Sincerely,

DBC 2023 National Jamboree Committee and Contingent Leaders