

# 100% OF YOUR GIFT STAYS LOCAL!

Your annual support to our Friends of Scouting campaign in Greater Cincinnati and Northern Kentucky provides financial aid and program delivery for Scouts in your community!

Your gift makes a difference in the lives of local Scouts in Greater Cincinnati and Northern Kentucky.



## Scouting is locally funded to support:



### 1. Outreach

More than 20 in-school and after-school programs at local schools provided by FOS.



### 2. Scout Activities

Enables the planning of large activities like Peterloo, Reds' Overnights, and Spook-o-ree.



### 3. Financial Aid

Provides financial support for families to participate in Scouting.



### 4. Camp

Replaces worn equipment, such as new bows and arrows, and enhanced properties.



### 5. Planning & Supporting

Allows development of unit resources, virtual content, and processing unit items.

## Your Membership Fee goes directly to the BSA National Council for:

- ✦ National Training Materials
- ✦ Youth Protection Services
- ✦ Membership Processing and Volunteer Background Checks
- ✦ Scout Handbook Development

Your Gift is Appreciated – Thank You!

## SUPPORT A SCOUT TODAY!

### CHECK INVESTMENT LEVEL

- |   |   |
|---|---|
| <input type="radio"/> <b>\$1500 – EAGLE LEVEL</b> ✦<br><i>Only \$125 approx. per month*</i><br>Support 6 Scouts | <input type="radio"/> <b>\$1000 – LIFE LEVEL</b> ✦<br><i>Only \$84 approx. per month*</i><br>Support 4 Scouts   |
| <input type="radio"/> <b>\$500 – STAR LEVEL</b> ✦<br><i>Only \$42 approx. per month*</i><br>Support 2 Scouts    | <input type="radio"/> <b>\$350 – FIRST CLASS LEVEL</b> ✦<br><i>Only \$30 approx. per month*</i><br>Support 1 Scout  |
| <input type="radio"/> <b>\$250 – SCOUT LEVEL</b> ✦<br><i>Only \$17 approx. per month*</i><br>Support 1 Scout    | <input type="radio"/> <b>\$100 – FRIEND LEVEL</b><br><i>Only \$8.50 approx. per month*</i><br>Support Scouting  |
| <input type="radio"/> <b>OTHER AMOUNT</b><br>\$ _____<br><i>Please write in amount on the line</i>              | ✦ Includes a special FOS Shoulder Strip & Tickets to a DBC Premier Event<br>✦ Includes a special FOS Shoulder Strip<br><small>*Monthly amount is approximate based on total giving level.</small> |

Name \_\_\_\_\_

Home Address \_\_\_\_\_

City \_\_\_\_\_

State \_\_\_\_\_ Zip \_\_\_\_\_

Phone (H) \_\_\_\_\_ Phone (C) \_\_\_\_\_

Email \_\_\_\_\_

Employer \_\_\_\_\_

Spouse's Employer \_\_\_\_\_

I will request a matching gift from my employer.  
See if your employer will match your gift: [www.danbeard.org/matchinggift](http://www.danbeard.org/matchinggift)

*By signing below, I am directing my donation to friends of Scouting as donor restricted for use by the Dan Beard Council in its annual operations to directly serve Scouts in Greater Cincinnati and Northern Kentucky.*

Signature \_\_\_\_\_ Date \_\_\_\_\_

- Yes, designate my gift to support local Scouting
- I am a member of:  Pack  Troop  Crew Unit # \_\_\_\_\_
- I am or my spouse is an Eagle Scout

### PAYMENT OPTIONS

- Payment Enclosed:  Cash  Check
- I prefer to pay by credit card
- American Express  VISA  Discover  MasterCard
- Card # \_\_\_\_\_
- Expiration \_\_\_\_\_ Bill Me  Monthly  Quarterly  One Time



Please make checks payable to: Dan Beard Council  
Address: 10078 Reading Road, Cincinnati, OH 45241

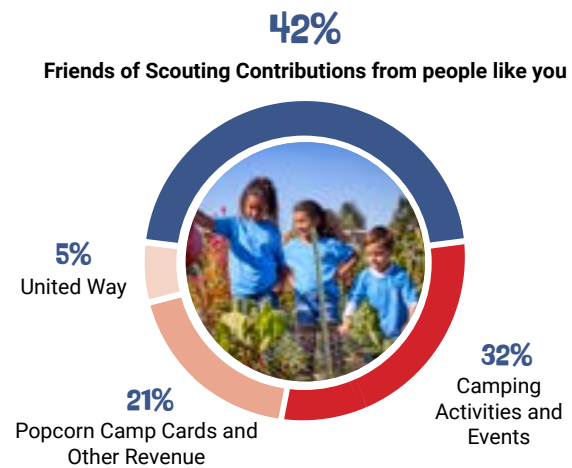
Donate Online: [www.danbeard.org/donate](http://www.danbeard.org/donate) or call 513.577.7690  
The Dan Beard Council is a 501c3 Nonprofit Organization.

## Did you know...

- Local Scouts log over 160,000 hours of community service on average each year. Your gift stays local in Greater Cincinnati and Northern Kentucky to impact programs that improve our community.
- Long-term Scouts are nearly twice as likely as non-scouts to graduate college, and Scouts learn about skilled trades and future careers through over 100 different merit badges.
- Each year, over 10,000 Scouts explore the outdoors and attend local first-class summer camp properties and programs funded by FOS.
- Every child can be a Scout. Scouting runs over 20 outreach programs at local schools that are funded by FOS. These programs provide Scouting experiences, books, uniforms, camperships, and financial support to all.
- Each year, youth earn approximately 14,000 merit badges that teach new life skills, develop future leaders, and allow them to explore future careers through character building programs funded by FOS.

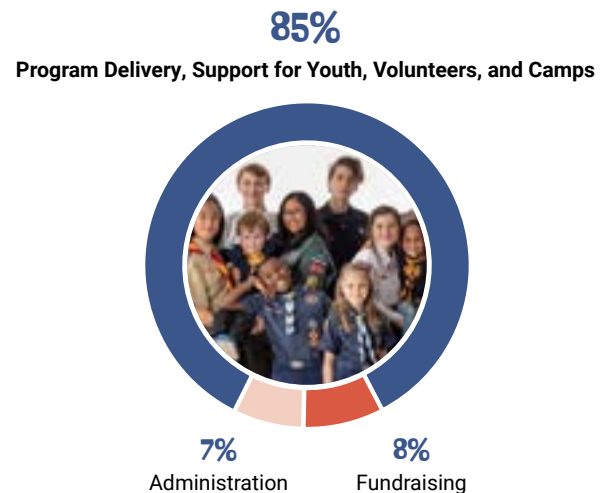
## How We Are Funded

Your Help, Support, and Impact are Huge



## How We Invest In Our Youth

It's All About Programs, Camps, and Resources



Live Scout Loud



## 2023 Friends of Scouting

Supporting Local Youth in Greater Cincinnati & Northern Kentucky



10078 Reading Road, Cincinnati, OH 45241  
 513-577-7700 | finance@danbeard.org  
 Find us online at www.danbeard.org

