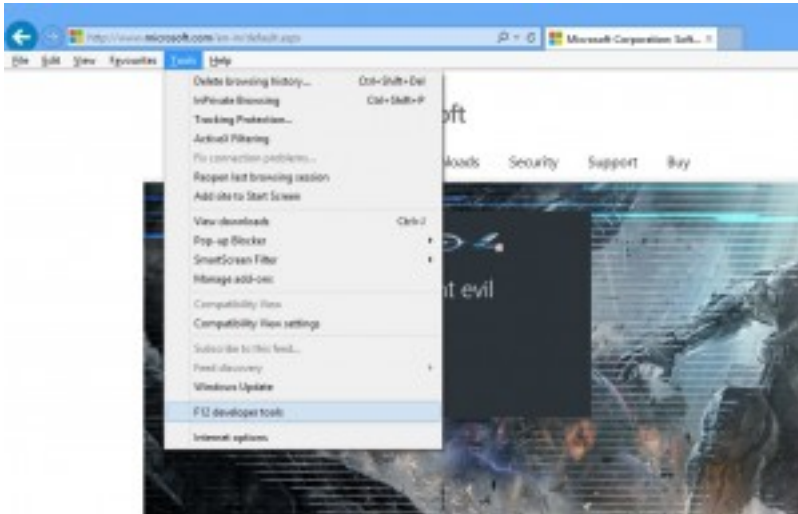


Using Internet Advancement in Browser Compatibility Mode

Written by Administrator

Thursday, 18 July 2013 15:34 - Last Updated Thursday, 18 July 2013 16:17

1. Open up Internet Explorer version 9 or 10. ([How to check what version of Internet Explorer you have](#))
2. Press Alt key on your keyboard to bring up the top menu or click on the gear icon at the far right. Then go to Tools > Developer Tools. Alternatively you can just press the F12 key on your keyboard.



3. This will bring up the IE developer tools which will allow you to select a compatibility mode or a previous version to run Internet Explorer in. (image below)



Using Internet Advancement in Browser Compatibility Mode

Written by Administrator

Thursday, 18 July 2013 15:34 - Last Updated Thursday, 18 July 2013 16:17

Web Developer Tools in Internet Explorer 10

Click on the 'Browser Mode' tab along the top and then click on the Internet Explorer version you want to simulate. You can also set the document mode in the next drop down over.